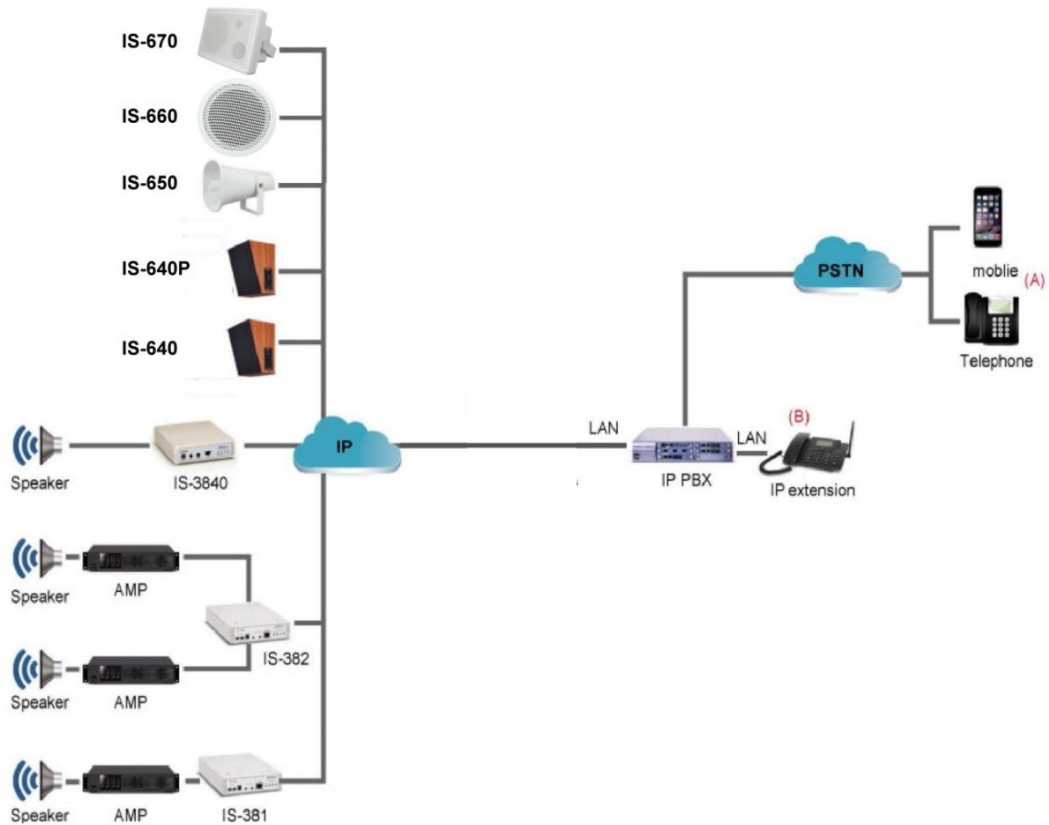


IP Speakers work with IP PBX

Application1

IP Speaker register to IP PBX directly (no need IBS software)



Flow:
A(mobile, Telephone)-->PSTN-->IP PBX-->IP Speaker extension-->send audio to that ip speaker
B(IP Extension)-->IP PBX-->IP Speaker extension-->send audio to that ip speaker
* IP Speaker register to IP PBX as extension
* No need IBS Software in this application

IP Speaker setting: (default ip http://192.168.0.100 username: voip , Password: 1234)

Ip speaker register to your ip pbx

Fill extension name, password and your ip pbx ip

Active:	<input checked="" type="radio"/> ON <input type="radio"/> OFF
Register Name:	1001
Register Password:	1001
IPB Server:	192.168.0.77:3092
Status:	Registered

Submit Reset

Press [Submit]-->[Save Change] until IP Speaker restarts, to register the broadcast system program.

Users can also check the online state of the broadcast point in the broadcast System

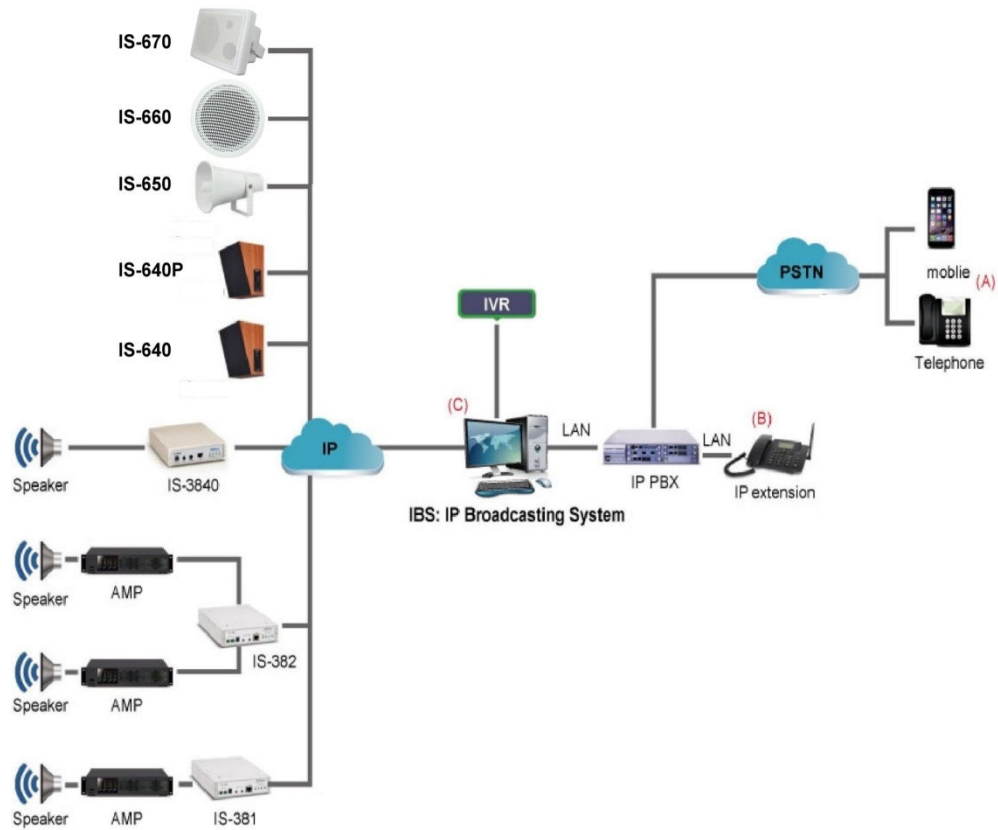
Active:	<input checked="" type="radio"/> ON <input type="radio"/> OFF
Register Name:	1001
Register Password:	1001
IPB Server:	192.168.0.77:3092
Status:	Registered

Submit Reset

Save Change

Application2

PSTN in and IP extension voice broadcasting



Flow:

A(mobile, Telephone)-->PSTN-->IP PBX-->IBS extension-->IVR-->send audio to individual/group IP Speakers

B(IP Extension)-->IP PBX-->IBS extension-->IVR-->send audio to individual/group IP Speakers

* IBS register to IP PBX as extension

* IP Speaker register to IBS Software as unique ID

* IVR:

When call IBS extension, the caller will hear IVR.

Enter password (can cancel this setup)

Enter Broadcast ID (can enter speakers group ID too)

Then send audio

C(IBS)-->send audio to individual/group IP Speakers

- 1.Your IP PBX open a account to IBS
- 2.IBS register to your ip pbx as a extension

IBS setting:

5.4. Extension Broadcast Setting

Select [Config.setting]-->[Ext.Set.]

The system can become an extension number of IP IBX through the method for registering IP IBX. Through dialing the extension number from other extensions and via IVR voice interaction, single point or group broadcast function can be executed



5.4.1 Display column of registration state

Unregister	
Regist.PBX Information	
Regist. PBX: <input type="checkbox"/>	Regist. Expire (sec.): 300
PBX IP: <input type="text"/>	Ext. User ID: <input type="text"/>
PBX Port: 5060	Ext. Password: <input type="text"/>

5.4.2 Login PBX data

Regist.PBX Information			
Regist. PBX:	<input type="checkbox"/>	Regist. Expire (sec.):	300
PBX IP:	<input type="text"/>	Ext. User ID:	<input type="text"/>
PBX Port:	5060	Ext. Password:	<input type="text"/>

Column	Specification
Regist.PBX	Select whether to register IP PBX
PBX IP	Set IP address of IP IBX to enter
PBX Port	Set communication port of IP IBX to enter; setting is 5060
Regist.Expire	Period of system registration IP PBX; setting is 300s
Ext.UserID	Set the extension number of IP IBX to enter
Ext.Password	Set the extension number of IP IBX to enter

5.4.3 Access IVR data

IVR Information	
Password Req.:	<input type="checkbox"/>
Password:	<input type="text"/>
Presage Tone:	<input type="text"/>
Terminate Tone:	<input type="text"/>

Column	Specification
Password Req	Select whether the extension broadcast function requires password verification flow
Password	Input the password of the verification flow; the password can only be digits
Presage Tone	Select the path storing the prelude sound and file name; the words of the folder names of the sound file and storage path shall have no space, the sound file format is MP3 or WAV
Terminate Tone	Select the path and file name of ending sound file storage; the words of the folder names of the sound file

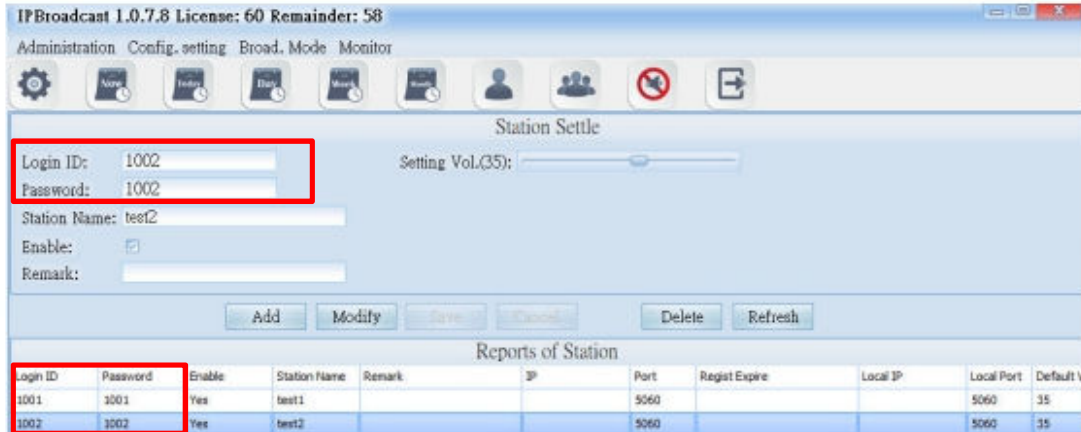
3. all speakers must set as a broadcast point

5.1. Setting of Broadcast Points

5.1.1 Establishment of broadcast points

Click [Config.setting]-->[Station Set.]

Establish the verification account/password and name of broadcast points in the system, and so on



Column	Specification
Login ID	Establish the registration name of the broadcast point; the data can only be the digit above 3 codes
Password	Establish the registration password of the broadcast point; input digit or word string
Station Name	Input the customized name of broadcast points
Enable	Select whether to start the broadcast point
Remark	Input remark materials
Default Vol.	Define the preset volume of the broadcast point; the setting range is 64-0

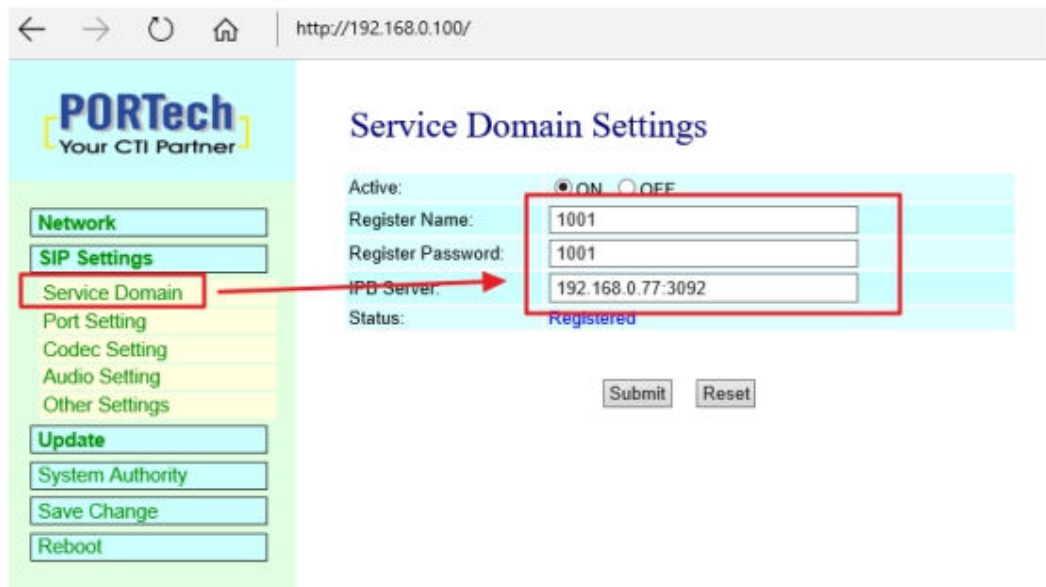
5.1.2 Information List of Broadcast Points

The list shows the registration information of the established broadcast points

Column	Specification
Login ID	It shows the registration account of the established broadcast point
Password	It shows the registration password of the established broadcast point
Enable	It shows whether to start the broadcast point
Station Name	It shows the name of the broadcast point input
Remark	It shows the remark materials input
IP	It shows the broadcast point's IP Address
Port	It shows the broadcast point's communication port
Regist Expire	It shows the broadcast point's login period
Local IP	It shows the system's IP Address
Local Port	It shows the system's communication port
Default Vol.	It shows the broadcast point's volume

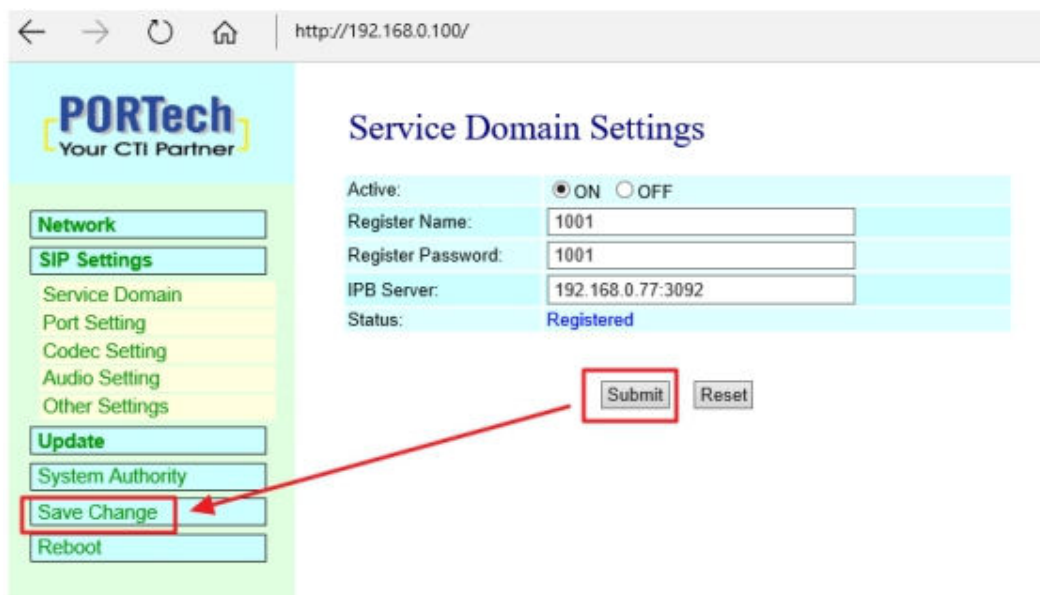
4. Ip speaker setting (ip speaker default ip http://192.168.0.100 username: voip , Password: 1234)

Log in IP Speaker WEB interface, click [SIP Settings]-->[Service Domain] fill the broadcast point account, password, the broadcast system's host IP and port number in corresponding columns of the program of the broadcast system



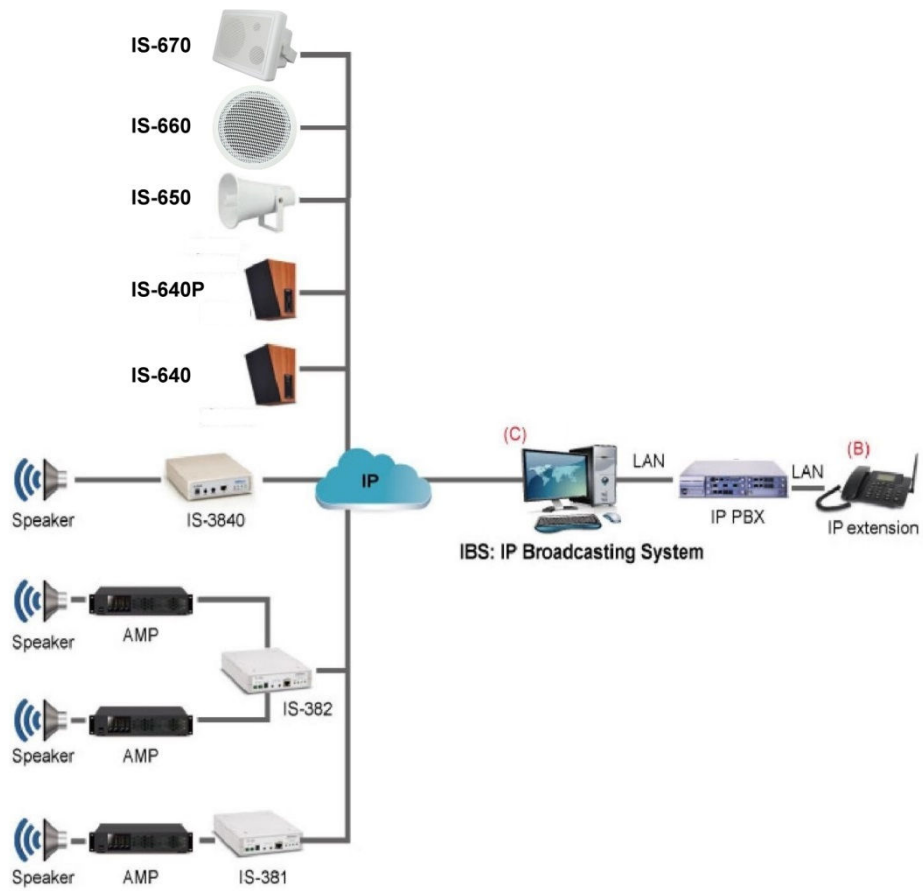
Press [Submit]-->[Save Change] until IP Speaker restarts, to register the broadcast system program.

Users can also check the online state of the broadcast point in the broadcast System



Application 3

Set as SIP Trunk to voice broadcasting



Flow:

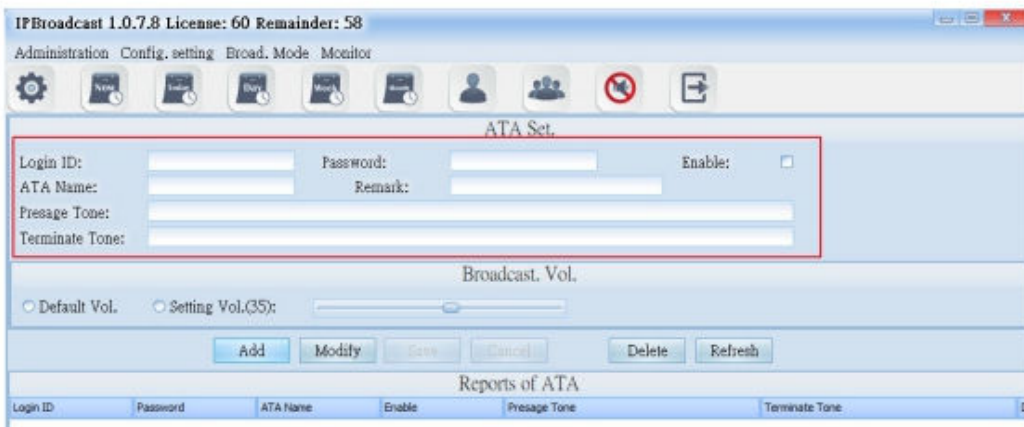
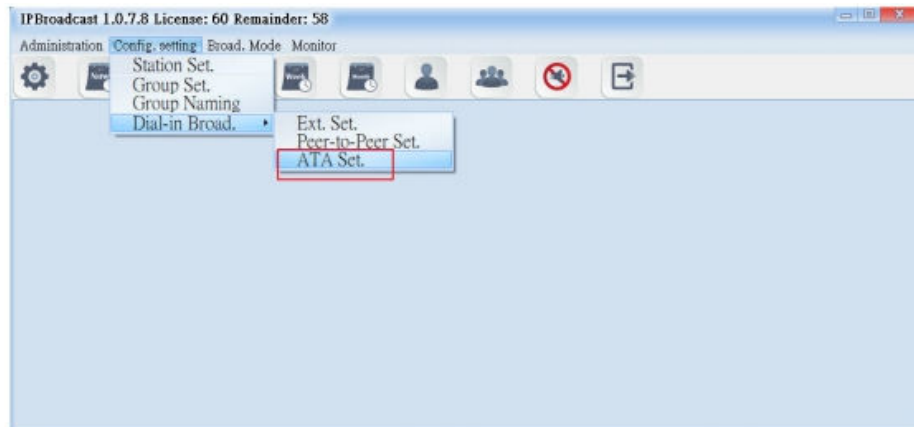
B(IP Extension)-->IP PBX SIP Trunk -->send audio to individual/group IP Speakers

C(IFS)-->send audio to individual/group IP Speakers

1. Your IP PBX set trunk

2. IBS Software open a account for your IP PBX to register

IBS Software setting:



Column	Specification
Login ID	Set the accounts for the IP phone or ATA gateway to verify the login. Or IP PBX
Password	Set the passwords for the IP phone or ATA gateway to verify the login. Or IP PBX
ATA Name	Set the dial-in name.
Presage Tone	Select the names of storage paths and files of the presage tone; the sound format is MP3 or WAV.
Terminate Tone	Select the names of storage paths and files of the terminate tone; sound format is MP3 or WAV.
Enable	select whether to enable this schedule; it is enabled by default
Remark	input remarks

3. your ip pbx must register to above account

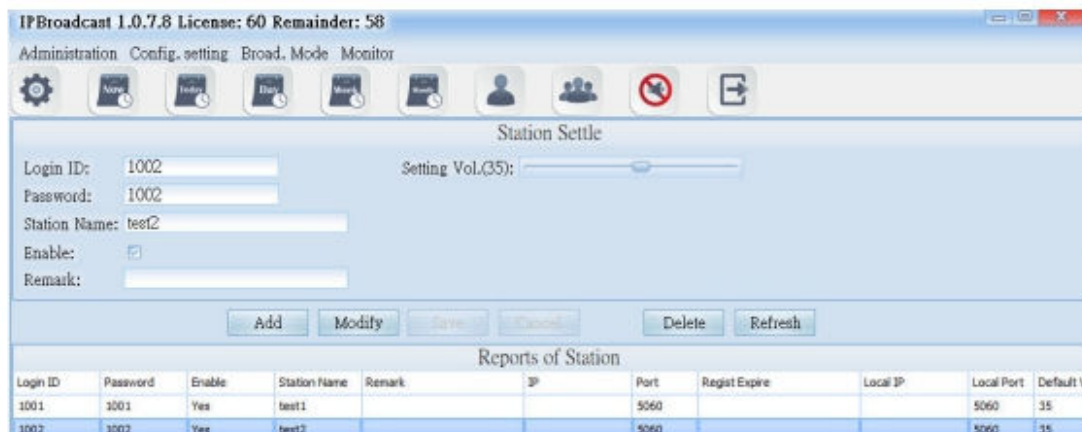
4. all speakers must set as a broadcast point

5.1. Setting of Broadcast Points

5.1.1 Establishment of broadcast points

Click [Config.setting]-->[Station Set.]

Establish the verification account/password and name of broadcast points in the system, and so on



Column	Specification
Login ID	Establish the registration name of the broadcast point; the data can only be the digit above 3 codes
Password	Establish the registration password of the broadcast point; input digit or word string
Station Name	Input the customized name of broadcast points
Enable	Select whether to start the broadcast point
Remark	Input remark materials
Default Vol.	Define the preset volume of the broadcast point; the setting range is 64-0

5.1.2 Information List of Broadcast Points

The list shows the registration information of the established broadcast points

Column	Specification
Login ID	It shows the registration account of the established broadcast point
Password	It shows the registration password of the established broadcast point
Enable	It shows whether to start the broadcast point
Station Name	It shows the name of the broadcast point input
Remark	It shows the remark materials input
IP	It shows the broadcast point's IP Address
Port	It shows the broadcast point's communication port
Regist Expire	It shows the broadcast point's login period
Local IP	It shows the system's IP Address
Local Port	It shows the system's communication port
Default Vol.	It shows the broadcast point's volume

Ip speaker setting (ip speaker login: default username: voip , Password: 1234)

Log in IP Speaker WEB interface, click [SIP Settings]-->[Service Domain] fill the broadcast point account, password, the broadcast system's host IP and port number in corresponding columns of the program of the broadcast system

Service Domain Settings

Active: ON OFF

Register Name: 1001

Register Password: 1001

IPB Server: 192.168.0.77:3092

Status: Registered

Submit Reset

Press [Submit]-->[Save Change] until IP Speaker restarts, to register the broadcast system program.

Users can also check the online state of the broadcast point in the broadcast System

Service Domain Settings

Active: ON OFF

Register Name: 1001

Register Password: 1001

IPB Server: 192.168.0.77:3092

Status: Registered

Submit Reset

Save Change